

# GREENE COUNTY, IOWA FARMLAND AVAILABLE

**74**  
ACRES M/L

## CONTACT

MATT ADAMS | IA LIC S59699000  
515.423.9235 | [MATT@PEOPLES COMPANY.COM](mailto:MATT@PEOPLES COMPANY.COM)

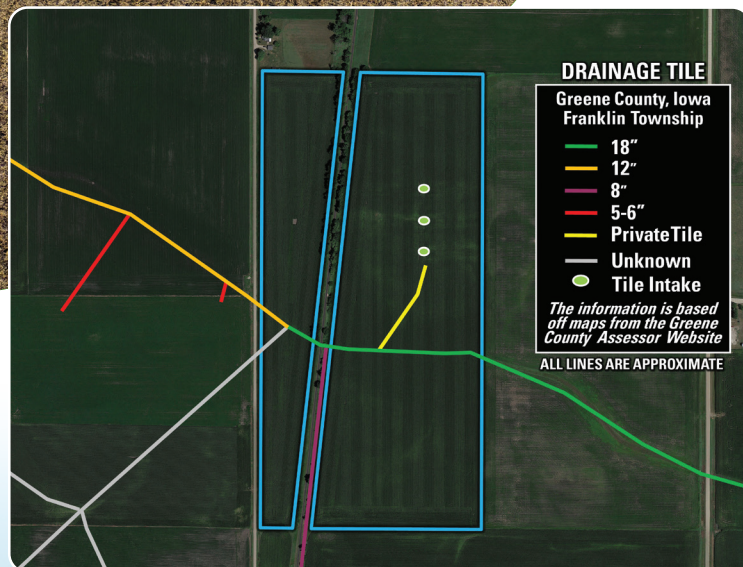
LISTING #18757  
 **PEOPLES**<sup>TM</sup>  
COMPANY  
INTEGRATED LAND SOLUTIONS

# GREENE COUNTY, IOWA FARMLAND AVAILABLE

LISTED AT: \$995,000

**74**  
ACRES M/L

## COUNTY DRAINAGE TILE



Peoples Company is pleased to present 74 acres m/l of prime Greene County, Iowa farmland. Located 5 miles south of Jefferson, Iowa and just south of Cooper, Iowa along Orchard Avenue. The farm includes 69.73 FSA NHEL cropland acres. Prominent soil types include highly productive Webster clay loam, Clarion loam, and Canisteo clay loam with an average CSR2 soil rating of 86.8, well above the Greene County, Iowa average CSR2 soil rating of 78.3.

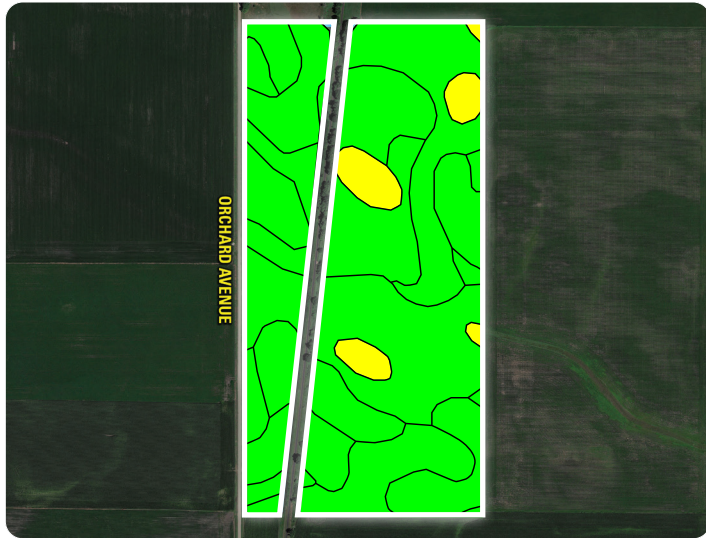
The Raccoon River Valley Trail cuts through the tract diagonally, and there is an established crossing in place to access the eastern part of the farm. Situated in Section 16 of Franklin Township, this farm lies within a strong agricultural community with grain markets and ethanol plants located nearby in Grand Junction, Iowa, and Coon Rapids, Iowa.

County drainage tile is located on the tract with a tile main running through the south half of the tract, draining water east off the farm. The farm lies within Drainage District 108 and sits near the top of the district. Additionally, there are three tile intakes located on the north half of the farm, indicating that additional private tile has been installed on the farm.

**PROPERTY TAXES: \$3,198**

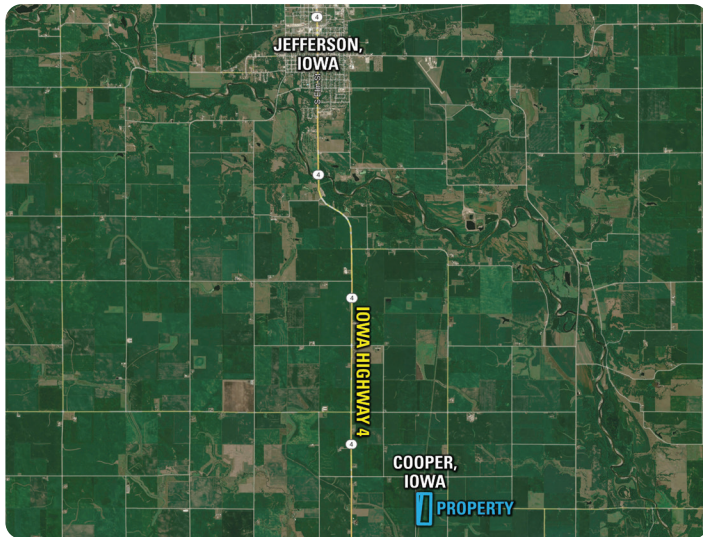
## CONTACT

MATT ADAMS | IA LIC S59699000  
515.423.9235 | MATT@PEOPLES COMPANY.COM



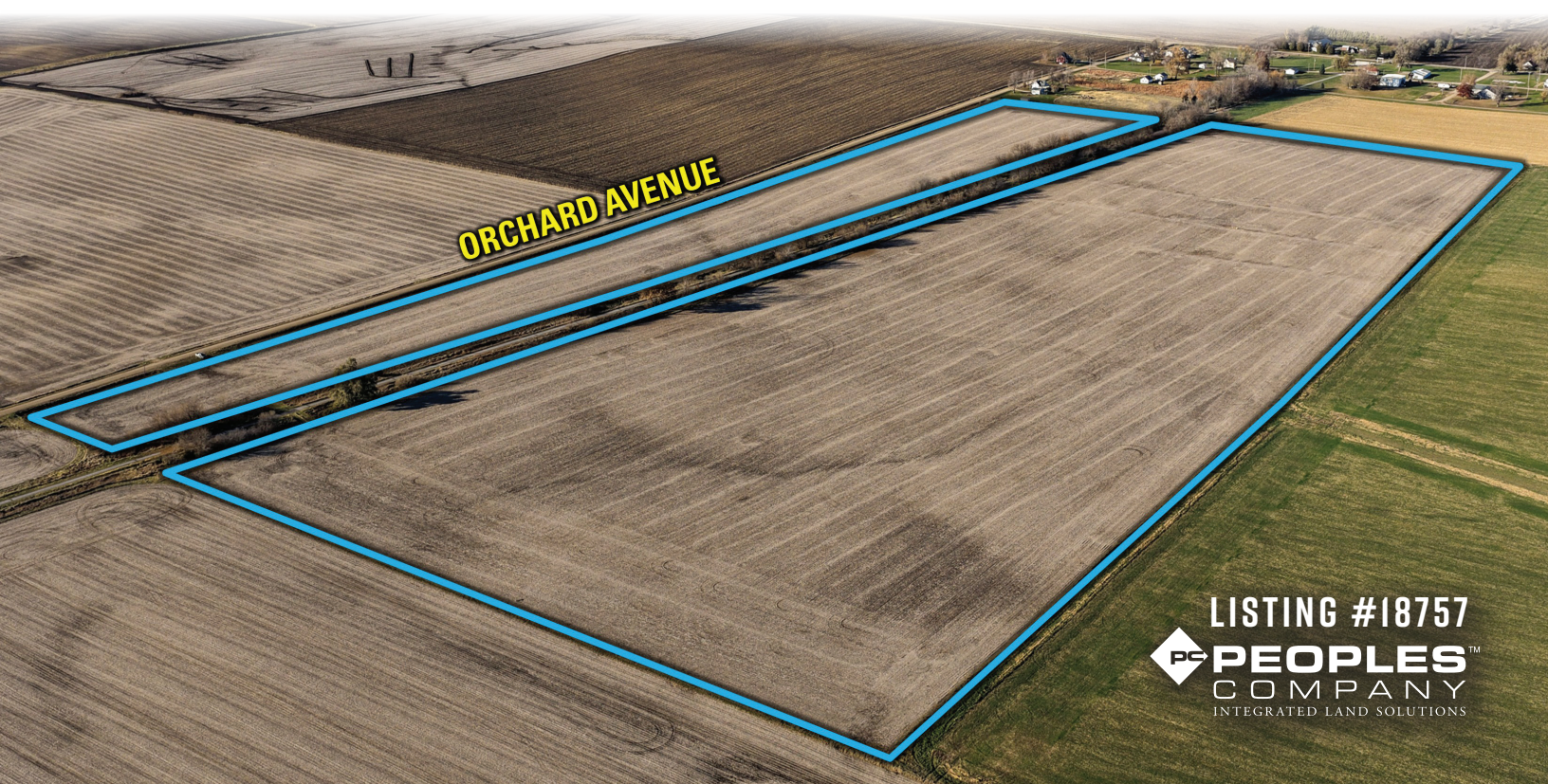
## TILLABLE SOILS MAP

Code	Soil Description	Acres	% of Field	CSR2
L107	Webster clay loam	18.53	26.58%	88
L138B	Clarion loam	15.50	22.23%	88
L507	Canisteo clay loam	13.38	19.19%	87
L55	Nicollet loam	10.94	15.69%	91
L138B2	Clarion loam	7.16	10.27%	85
L138C2	Clarion loam	1.76	2.52%	83
6	Okoboji silty clay loam	1.40	2.01%	59
4	Knoke silty clay loam	1.05	1.51%	56
<b>Average</b>				<b>86.8</b>



## DIRECTIONS

**From Jefferson, Iowa:** Head south on Iowa Highway 4 for five miles. Then, turn left (east) onto County Highway E57 and go for one mile. Just before Cooper, Iowa, turn right (south) onto Orchard Avenue for a quarter of a mile. The farm will be on the left (east) side of the road. Look for Peoples Company signage.





12119 Stratford Drive  
Clive, IA 50325



PeoplesCompany.com  
Listing #18757



SCAN THE QR  
CODE TO THE LEFT  
WITH YOUR PHONE  
CAMERA TO VIEW  
THIS LISTING ONLINE!

## CONTACT

MATT ADAMS | IA LIC S59699000  
515.423.9235 | MATT@PEOPLES COMPANY.COM

**74**  
ACRES M/L

# GREENE COUNTY, IOWA FARMLAND AVAILABLE

All information, regardless of source, is deemed reliable but not guaranteed and should be independently verified. The information may not be used for any purpose other than to identify and analyze properties and services. The data contained herein is copyrighted by Peoples Company and is protected by all applicable copyright laws. Any dissemination of this information is in violation of copyright laws and is strictly prohibited.